



POWER ANALYTICS  
Foresight as accurate as hindsight.

## Invitation to EDSA Paladin DesignBase 4.0 TRAINING COURSE in Stavanger, Norway

**Time:** 6<sup>th</sup> to 8<sup>th</sup> of March 2012

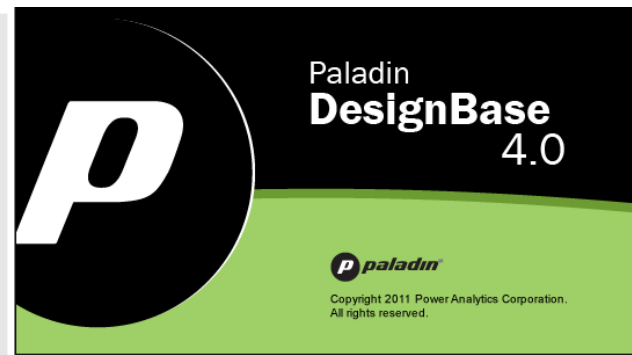
**Place:** Unitech Power Systems Office

**Address:** Forusbeen 78 Stavanger, Norway

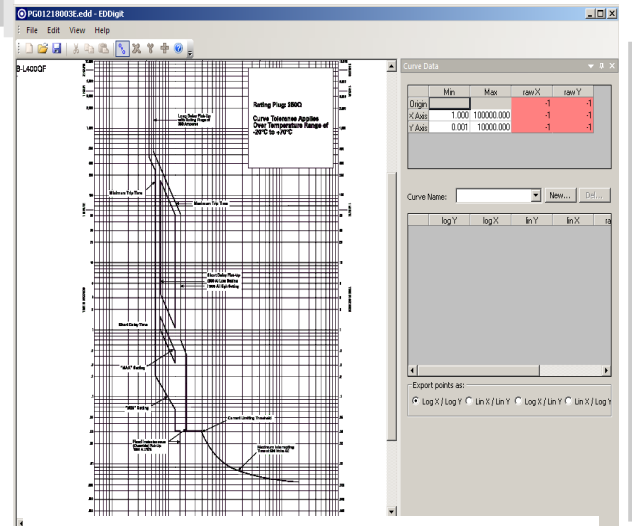
**Registration deadline:**  
6<sup>th</sup> of March 2012

**The training includes:**

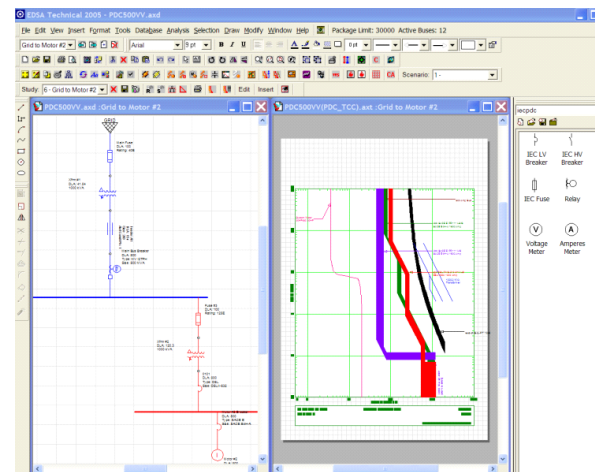
**Modelling in EDSA Paladin  
Design Base  
Short Circuit Calculations  
Load Flow and Motor Start  
analysis ODBC and  
Protective Device Co-ordination**



EDSA PALADIN DESIGN BASE



EDSA PDC SOFTWARE DIGITIZER



EDSA PROTECTIVE DEVICE PROGRAM (PDC)

<b>Company Name:</b>	<b>e-mail:</b>
<b>Contact person:</b>	<b>Phone:</b>
<b>Address:</b>	<b>City:</b>
<b>Postcode:</b>	<b>Fax:</b>
<b>Country:</b>	
<b>Participant(s):</b>	
<p>Please complete the training registration form and mail or fax it to us, along with your order as soon as possible latest before 6th of March 2012. <b>Space is limited, so reserve your place today</b></p>	
<b>Sign/Date:</b>	EDSA Training in Stavanger Norway, March 2012

## Overview

### General Introduction

All modern project design is focusing on optimal solutions to meet both technical and economical requirements. The EDSA Paladin Design Base is a world leading Analysis Software developed for Electrical Engineers performing analysis, simulations, calculations and preparing project related documentation and reports within electrical power generation and utility area. This course will emphasise on the latest Windows version and it's new powerful user-friendly features.

### Course Objectives

The objective of this course is to present an overview of the EDSA Paladin applications and feasibility's. Additionally, inform the participants about the concept behind the program, such as the basic mathematical relations, equipment modelling techniques, etc., necessary to perform analysis and calculations related to typical power system applications.

### Course Contents

This course will be based on EDSA Paladin software tool, especially designed for network modelling and analysis of electrical power systems.

The following topics are covered:

- General Information about the EDSA Paladin Design Base Software Package
- EDSA-CAD/EDSA EDITOR/ODBC
- Short Circuit Calculations
- Load Flow and Motor Start Analysis
- Protective Device Co-ordination
- Practical training based on typical electrical power system applications

### Who Will Benefit From Attending?

Electrical Engineers involved in design, operation, planning or maintenance of electrical power systems and utilities. The course is not focusing on any particular type of industry, and we will therefore encourage engineers working within the conventional industry, petrochemical industry, electrical generation and distribution etc., to register for the course. The course is also useful for engineers having previous experience with power system analysis by longhand calculations, earlier EDSA Paladin versions as well as other software programs.

### Course Organiser

Unitech Power Systems AS, Power Analytics Europe, is the European Headquarters for the EDSA Power System Analysis Software. Unitech has sold and used the EDSA system in several projects since 1987 and during this period trained more than 2500 engineers, in Europe Middle East and Asia. Unitech Power Systems AS comprises a team of well-qualified specialists. Our philosophy is to put electrical calculations and advanced simulations into a wider context. This includes design verifications, functional assessments, operational philosophies and Electrical Hazard Analysis. We are authorised training centre for Power Analytics, USA (formerly EDSA Micro Corp.) and are responsible for the technical content and administrative arrangement of this course.

## Agenda

Time	Day 1	Day 2	Day 3
09.00	Opening/registration	Summary Day one	Summary Day Two
09.15	Presentation of EDSA Paladin DesignBase (DB4.0)	Methodology for Short circuit analysis, Normative references	Practical exercises in Load Flow Analysis and Motorstart
09.45	Introduction to Paladin Windows system, program packages, modules, licensing, SMA services and support		
10.15	Break	Break	Break
10.30	EDSA file management, Import / Export system, ODBC, Databases, etc.	Methodology continues	Methodology for DB4 Protective Devices Coordination Analysis (PDC) and databases
11.00	Practical use of DB4 in projects, design and analysis	Presentation of short circuit input data, analysis and reports	
11.30	Presentation of graphic Interface and Jobfile Editor		
12.00	Lunch	Lunch	Lunch
13.00	Practical exercises in modelling and DesignBase Jobfile Editor	Practical exercises in Short circuit analysis	Practical exercises in Protective Device Co-ordination and databases
13.30		Review exercises and summary	
14.15	Break	Break	Break
14.30	Exercises continues	Methodology for Load Flow Analysis and Motorstart	Review exercises and summary
15.00			Presentation of other DB4 program modules, discussions regarding future upgrades and summary
15.30	Review exercises and summary	Presentation of DB4 Load Flow programs	
16.00	Adjourn	Adjourn	Adjourn

Video projector will be used for all presentations during the course. To perform the exercises, the attendees will be working on laptops, one for each participant. The laptop's are running MS Windows XP, Vista with latest EDSA Paladin Design Base 4.0 version installed. Complete course compendium, developed and maintained by our specialists, including exercises and course diploma will be distributed. The course and documentation language is English.

### Lecturers

Specialist engineers in Unitech Power Systems AS, Power System Analysis Department

## Practical Information

<b>Venue:</b>	Unitech Power Systems AS Forusbeen 78, Stavanger, Norway Phone: +47 51 95 89 00 Fax: +47 51 95 89 10	
<b>Date/Time:</b>	6h to 8th of March 2012	
<b>Course fee:</b>	General	NOK 12000,00, EURO 1,500.00 Discount for additional participants
	Universities:	40% discount of prices above
	The course fee is inclusive of course compendium / lunches.	
<b>To register:</b>	By Post:	Unitech Power Systems AS Attn.: Bjørg K. Furnes P.O. Box 47, 4064 Stavanger, Norway
	By e-mail:	<a href="mailto:larsen@unitech.no">larsen@unitech.no</a>
	By fax:	Unitech Power Systems AS (47) 51 95 89 10 Attn.: Bjørg Furnes
<b>Registration Deadline:</b>	Monday the 6th of March 2012 for the training course. Registration after this date can also be possible by contacting Unitech directly.	
<b>Payment:</b>	By invoice or cheque to Unitech Power Systems AS	
<b>Cancellation:</b>	If cancellation is received after the registration deadline, a cancellation fee of Euro 500.00 has to be paid. For a cancellation later than 4 days before course start-up, full course fee has to be paid, and the complete course compendium will be sent to the registered company.	
<b>Hotel booking</b>	Unitech's Office is located at Forus, 10-20 minutes by car from centre of Stavanger, Sandnes and Sola (airport).	
	Due to quite high activity in the Stavanger area this week and limited of space on the training, we recommend you to book a hotel room and send your registration as soon as possible	
	Hotel booking can be arranged by each participant directly to any hotel in the area.	
	We can recommend Park Inn Hotel in Stavanger Norway Lagaardsveien 61, P.O. Box 307, N-4002 Stavanger Phone +47 51 76 20 05/ fax +47 51 76 20 01 The price for hotel rooms at Park Inn is 1295,-/1395,- Free transport to our office can be arranged fro this hotel.	
	For other hotels in Stavanger, Sandnes and Sola the approximately price is NOK 1000,- -1500,- for single room including breakfast buffet.	
	You can also find more information about hotels and map of the Stavanger region on Internet at: <a href="http://www.stavanger-guide.no">http://www.stavanger-guide.no</a> or similar links.	
<b>Internet:</b>	<a href="http://www.unitech.no">http://www.unitech.no</a>	